

WINSITE

Additional software platform for the Win1D and Win50 programs to monitor power system networks in real time

Description

WinSite is a Windows based software program designed to view and analyse in a quick and simple way the status of power system equipment based on the ACM1D and NRC50 control units

It provides efficient remote management with hierarchical and intuitive data presentation.

WinSite may:

- Run as a robot that is able to automatically establish connections with individual power systems, according to a user defined scenario, and collect status information
- Wait for incoming calls from power systems that are able to automatically report their status

WinSite (as Win50 and Win1D) is suitable for use with the following types of connection:

- Local (RS232/RS485)
- Modem connection
- TCP/IP connection assuming the remote power system is equipped with an appropriate network gateway.

WinSite reports in a simple and concise way the status of a set of remote power systems. More specifically, it provides a multiple map view of the equipment, hierarchically organised.

As many levels and as much equipment as needed can be defined. It can be interfaced to the power system software suite (Win50, Win1D) thus allowing an accurate diagnosis of any problems arising within each piece of remote power plant.

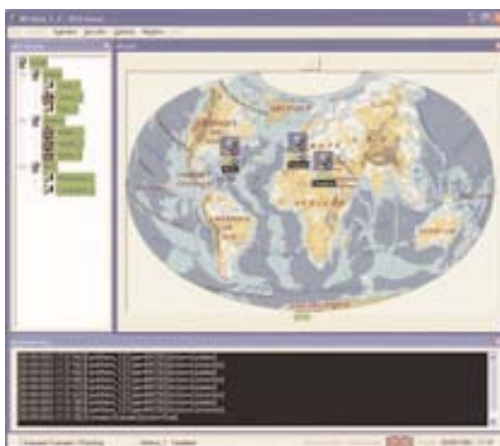
A smart communication manager allows you to connect to equipment with the Win50 or Win1D software without interrupting the polling process of WinSite.

An Administrator mode is available to establish the mapping and equipment organisation, to define the polling scenarios, etc.

Running a scenario

The map view displays a bitmap upon which the sub-map entries and the equipment icons are placed.

When a scenario is executing, WinSite establishes communication with the appropriate piece of equipment and retrieves its status information.



The views are refreshed according to the equipment status with simple colour coded reporting:

- The status of the communication
- The status of the equipment itself

When an equipment alarm is activated, further analysis is available by checking the text based alarm list. If a more detailed diagnosis is necessary, the equipment supervision software (Win50 or Win1D) can be launched directly from WinSite to connect to the equipment concerned.

Minimum PC configuration:

- Operating system: Windows NT4, Windows 98, Windows 2000 or XP
- 64Mb RAM
- SVGA monitor with 256 colours
- A serial port (COMx) for 19200 bauds communication (RS232 or RS485)
- A modem for remote communication with equipment or
- Ethernet access for remote communication through the TCP/IP network
- 20Mb of hard disk space (depends on the complexity of the map organisation)

Languages

English, French or Spanish are available as standard with the WinSite package. For other specific languages please contact us.

Security access

3 different access levels are available:

- User: Read only with access to the different views
- Super user: Start or stop a scenario
- Administrator: Full access to all operations (i.e. defining a project or the map hierarchy, creating new equipment etc)

Each access level is password protected

Product reference:

WinSite

For use with controllers:

ACM1D, NRC50