

WIN50

Powerful and user friendly software designed to manage power systems supervised by an NRC50 control unit

Win50 is a Windows based software program developed to manage power systems controlled and monitored by an NRC50 control unit. It provides easy user access to all system measurements, status indicators and set-up parameters. It is a powerful tool that helps service personnel set up, monitor and maintain power systems equipped with an NRC50 control unit.

Key features

• Complete system monitoring

Win50 provides user-friendly access to all system measurement, status and alarm indicators, with a hierarchical presentation of the data allowing an accurate diagnosis of any equipment faults.

- Mains measurements: single or three phase voltage, current and frequency
- System DC measurements (with polarity indication): Rectifier temperature, rectifier output voltage and current, battery voltage, current and temperature, load voltage and current

- Battery management: float and equalizing charge mode, battery test with automatic or manual initiation, battery life monitoring

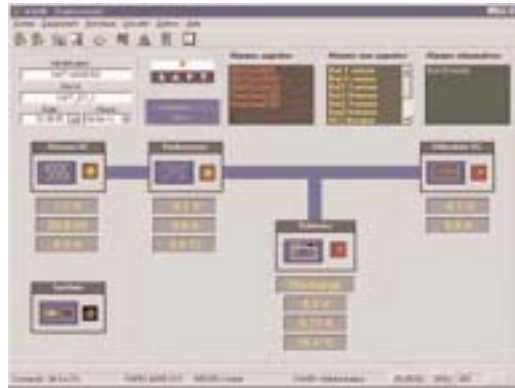
- System status & alarms: Win50 includes a powerful and user friendly status and alarm management module. A set of screens allows adjustment of system set points, alarm thresholds or system characteristics. An equation interpreter within the Win50/NRC50 package allows the creation and configuration of complete status and alarm management files for the most sophisticated and complicated systems or sites. All alarms can be stored in a time stamped history log, sorted and filtered according to their priority level.

- Rectifiers and/or power cabinets added to the power system are automatically detected.

• System settings

Win50 provides a user friendly interface to easily and safely (password protection) program all system set-up parameters. On screen displays allow the adjustment of system set points, alarm thresholds and system characteristics (float, boost and commissioning voltages, temperature compensation slope, low voltage disconnect, battery capacity, battery test etc)

The Win50 configuration system simplifies the addition of a new battery string and/or a new power cabinet.



• Remote commands

Win50 enables remote initiation of maintenance operations such as battery test or high rate battery charge etc.

• Event history log

WIN50 can access the history log of the system alarms stored in the NRC50 unit control and display them in a user friendly format

The history log of alarms, stored in the NRC50 control unit can be downloaded, displayed, or stored in a file for later analysis (e.g. export to an MS Excel sheet). Historical battery test data can be downloaded as well.

• Access security

Two different types of security are provided:

- Win50 security: 3 different password protected access levels are provided: User, Super user (allows modification of a limited number of set-up parameters) and Administrator (full access to set-up parameters)

- NRC50 security: this restricts the possibility to change the system set-up and send commands within the power system itself

• Communication modes

The Win50/NRC50 package handles 3 types of communication:

- On site: local communication via RS232 or RS485 port
- Remotely through a PSTN or GSM modem (option)
- Remotely over a TCP/IP network (NCS web server/gateway option)

• Languages

English, French, Spanish and Russian are available as standard with the Win50 package. For other specific languages please contact us.

• Management of a network of power systems

The Win50 software can be embedded in the power system network management platform: Winsite.

Winsite is a Windows based software program designed to monitor and control in real time a complete power system network from a central location. See Winsite documentation.

• Minimum PC Set-up

- Operating system: Windows NT4, Windows 98, Windows 2000 or XP
- 64 Mbytes of RAM
- 20 Mbytes of hard disk space
- A modem for remote communication with NRC50 unit
- A RS232 serial port for 19600 bauds communication
- Ethernet access through the TCP/IP network for remote access. A 10Mb Ethernet connection.

Product reference:

Win50

For use with controller:

NRC50

Delivery: Win50 software is delivered on a CD-ROM complete with full documentation