

## WIN1D

### Powerful and user friendly software designed to manage power systems supervised by an ACM1D control unit

Win1D is a Windows™ based software program that has been developed to manage power systems that are controlled and monitored by an ACM1D control unit. It provides easy user access to all system measurements, status indicators and set-up parameters. It is a powerful tool that helps service personnel set up, monitor and maintain power systems equipped with an ACM1D control unit.

#### Key features

##### • Complete system monitoring

Win1D provides user friendly access to all system measurement, status and alarm indicators. Data is reported in real time, providing complete and accurate information:

- Embedded rectifiers are automatically detected.
- System measurements: load voltage and current, battery voltage, current and temperature.
- System status & alarms: 29 system status and alarm indicators can be easily monitored thanks to the Win1D software.

##### • System configuration

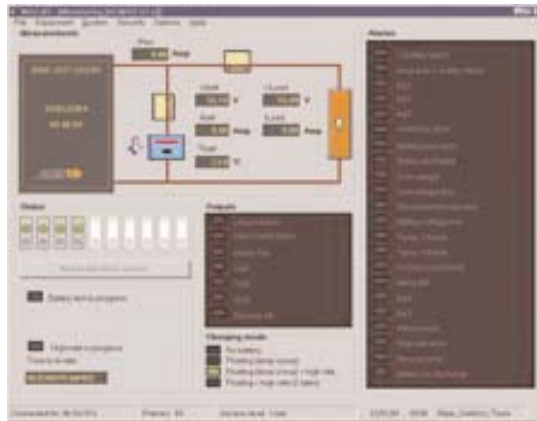
Win1D provides a user friendly interface to easily and safely (password protection) program all system set-up parameters. On screen displays allow the adjustment of system set points, alarm thresholds or system characteristics (float or boost voltages, temperature compensation slope, low voltage disconnect, battery capacity, battery tests, communication parameters etc.)

##### • Remote commands

Win1D enables remote initiation of maintenance operations such as battery test or high rate battery charge etc.

##### • Event history log

The ACM1D can be equipped with a history log (optional pcb). This log can store up to 512 alarm and communication events with full time stamping. The history log stored in the ACM1D control unit can be downloaded, displayed, printed or stored in a file for later analysis (e.g. export to an MS Excel sheet). Historical battery test data can be downloaded as well.



##### • Secure access

3 different password protected access levels are provided: User, Super user (allows modification of a limited number of set-up parameters) and Administrator (full access to set-up parameters)

##### • Communication modes

The Win1D / ACM1D package handles 3 types of communication:

- On site: local communication via RS232 or RS485
- Remote:
  - 1) Via PSTN or GSM network (modem option)
  - 2) Via TCP/IP network (NCS web server/gateway option)

##### • Languages

English, French or Spanish are available as standard with the Win1D package. For other specific languages please contact us.

##### • Management of a network of power systems

The Win1D software can be embedded in the power system network management platform: Winsite.

Winsite is a Windows based software program designed to monitor and control in real time a complete power system network from a central location.

See Winsite documentation.

##### • Minimum PC configuration

- Operating system: Windows NT4, Windows 98, Windows 2000 or XP
- 64 Mbytes of RAM
- 20 Mbytes of hard disk
- A modem for remote communication with the ACM1D control unit, or Ethernet access through the TCP/IP network.

#### Product reference:

Win1D

#### For use with controller:

ACM1D

#### Delivery:

Win1D software is delivered on a CD-ROM with full documentation and 2 sets of communication cables.