

ACM1D

Flexible alarm and control module for monitoring stand-alone power systems

Key Features

- **Rectifier management**

Individual control of up to 10 rectifiers.
Automatic detection of installed rectifiers (Plug'n play).

- **Battery charge control**

- Floating with temperature compensation
- High rate charge (periodic or manually triggered)
- Charge current limitation

- **Battery discharge control**

Non essential load disconnection.
Low voltage threshold (pre-alarm before a system shutdown).
Battery disconnection to protect against deep discharge (LVD).

- **Battery test**

Controlled discharged at a programmable constant current.
Periodic or manually triggered.

- **Alarms**

The ACM1D manages 29 configurable alarms.
These alarms can be reported on the local display and routed on digital outputs.

- **Inputs**

Up to 8 inputs are available to manage equipment such as genset, air-conditioners, doors etc.

- **Digital outputs**

6 configurable digital outputs are available to report alarms.

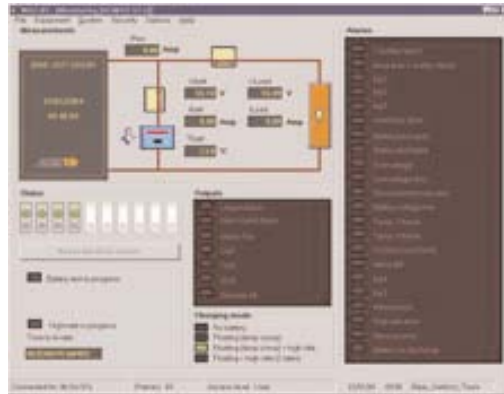
- **History log**

The ACM1DV3 can be equipped, as an option, with an history board.
This board can store up to 512 events with full time-stamping.

- **Local Man Machine Interface**

Local keypad to scroll ACM1D menus with LCD display (2 lines/8 columns and 3 LED's on front panel):

- System status and alarms
- System measurements



- **User communication**

RS232 communication port available on front panel (RJ45 connector)

This communication link can be connected to :

- A RS232 COM port on a PC
- A modem (optional)
- An Ethernet board providing TCP/IP connectivity (Mail alerts, SNMP, Web server)
- Optional: SMS status report via modem
- Optional: automatic call-out to a maintenance center in case of alarm

- **Win1D3/WinSite**

The ACM1D can be fully monitored and configured from the Win1D3 Windows based software.

It allows remote connection to the ACM1D (RS232/Modem/TCP-IP).

Winsite is the network power control platform to supervise and monitor complete networks of power equipment.

- **Approvals**

CE marked.

For use in systems:

MPS270, MPS660, MPS1600, MTP1800C, MTP2200C

For use with rectifiers:

SM270, SM660, SM1600, SM1800, SM2800

For use with software:

Win1D, WinSite

Flexible alarm and control module for monitoring stand-alone power systems

SPECIFICATION

Input	
Input voltage	18 - 75Vdc
Nominal current	0.15A (48V input)
Mains measurement	
Input power	Mains presence (digital input)
DC Measurement	
Voltage	2 DC voltage measurement inputs (battery and DC Bus) 0/60V
Current	2 DC current measurement inputs (battery and load) 0/50mV or 100mV, 0/5V link selectable
Temperature	1 temperature measurement 10 mV/K (LM335 sensor)
Protection	
Input	Internal input fusing
Connections	
Alarm outputs	Transistor outputs: AC fail plus five additional outputs configurable to any combination of 29 internal alarm conditions. Front panel LED alarm indication
Low voltage disconnect	LVD 1 drive -controls battery low voltage contactor LVD 2 drive-controls non-essential load contactor
Auxiliary inputs	Up to eight additional digital inputs for monitoring of external equipment
Communication	
Standard	Direct RS232 connection and optional modem connection, or TCP/IP via additional NCS module (Win1D3 Windows software package available)
Battery management	
Battery charge modes	Floating with temperature compensation, floating with temperature compensation plus equalise charge, (configurable float temperature compensation (FTC) curve)
Battery test	Periodic or manually triggered battery test (test performed at constant discharge current)
Mechanical specification	
Dimensions	128.7m (3U) H, 45.7mm (9TE) W, 225mm D
Weight	< 0.5kg
Environmental	
Operating temperature	-20°C to +70°C ambient
Standards	
Safety	Meets EN60950
EMC	Meets EN50081-1, EN50082-2, EN55022-Class B